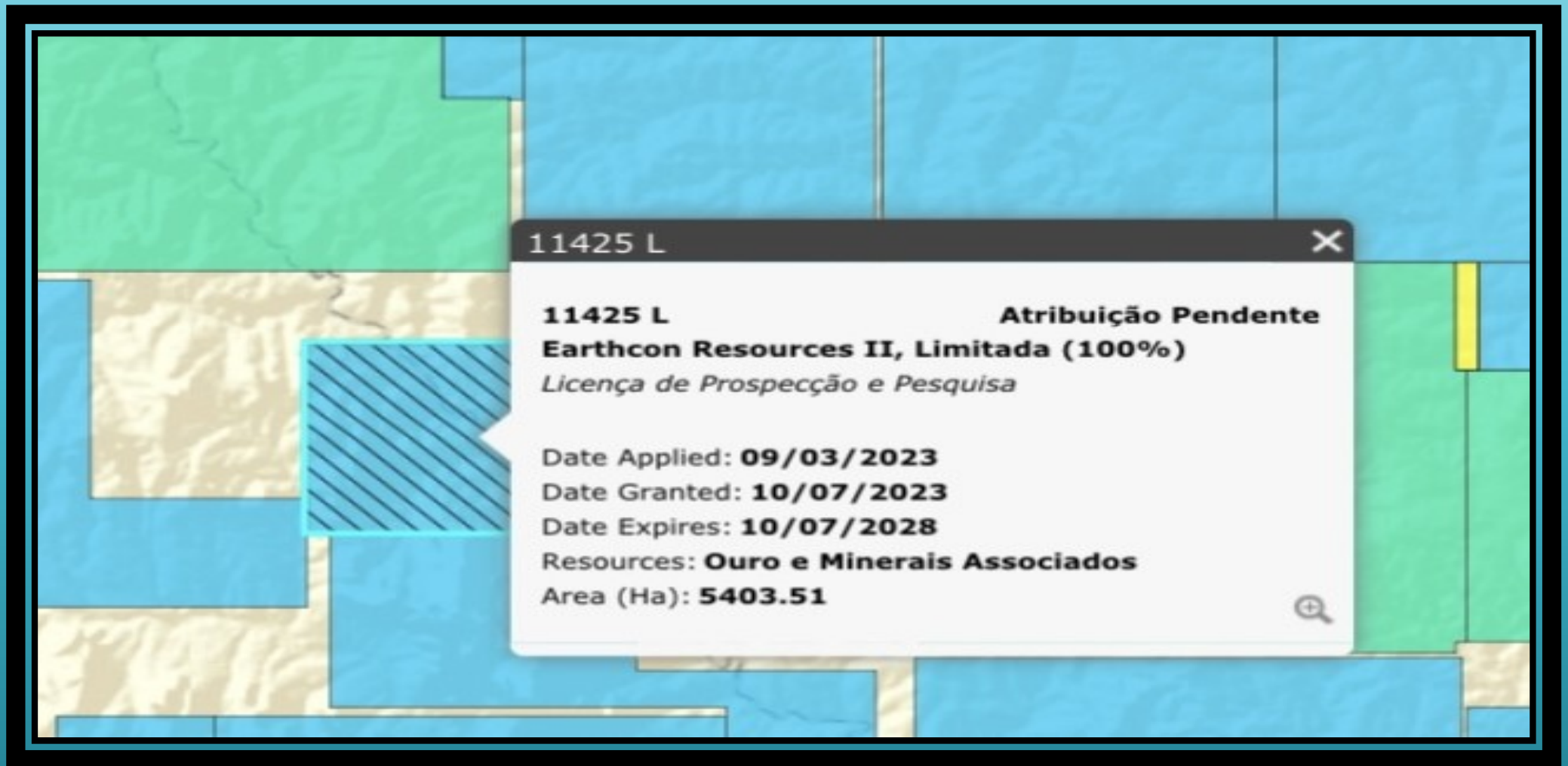
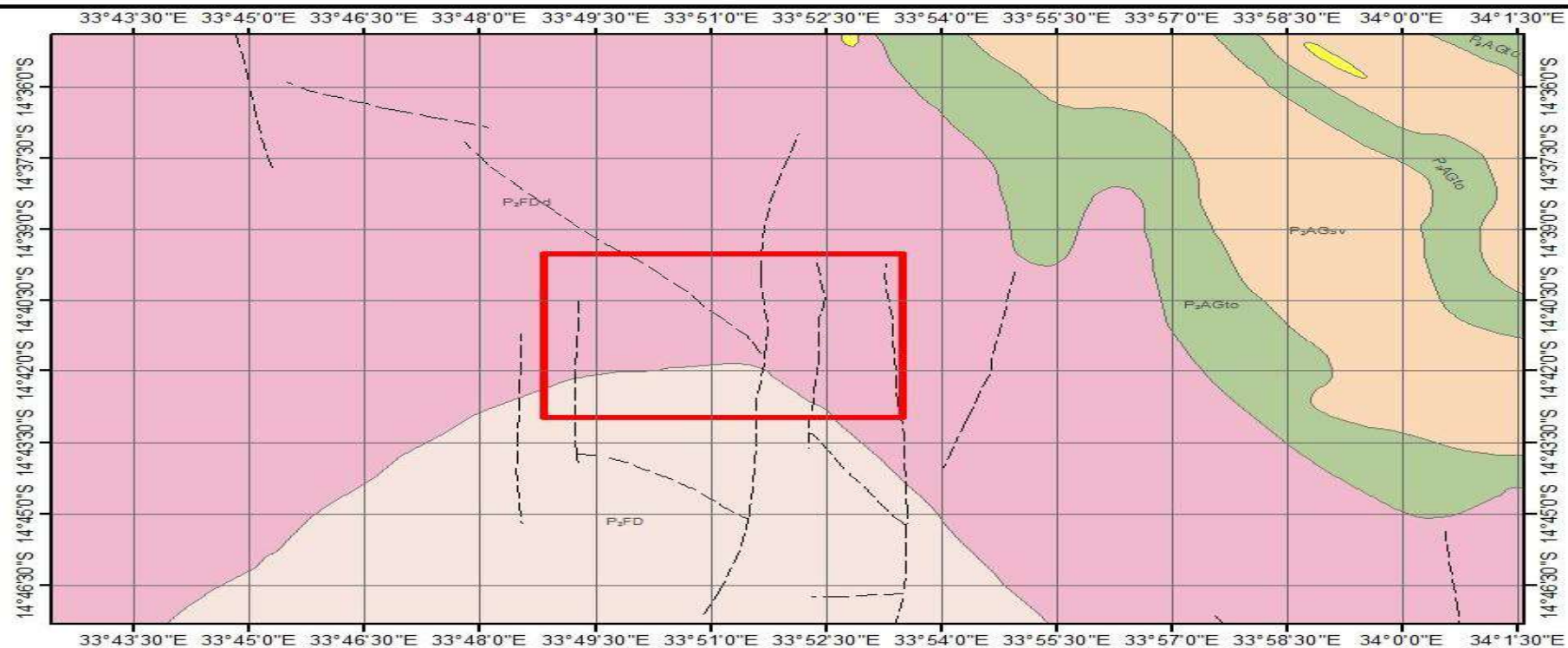


# EARTHCON RESOURCES II – GOLD AND ASSOCIATE MINERALS



# EARTHCON RESOURCES II – GOLD AND ASSOCIATE MINERALS



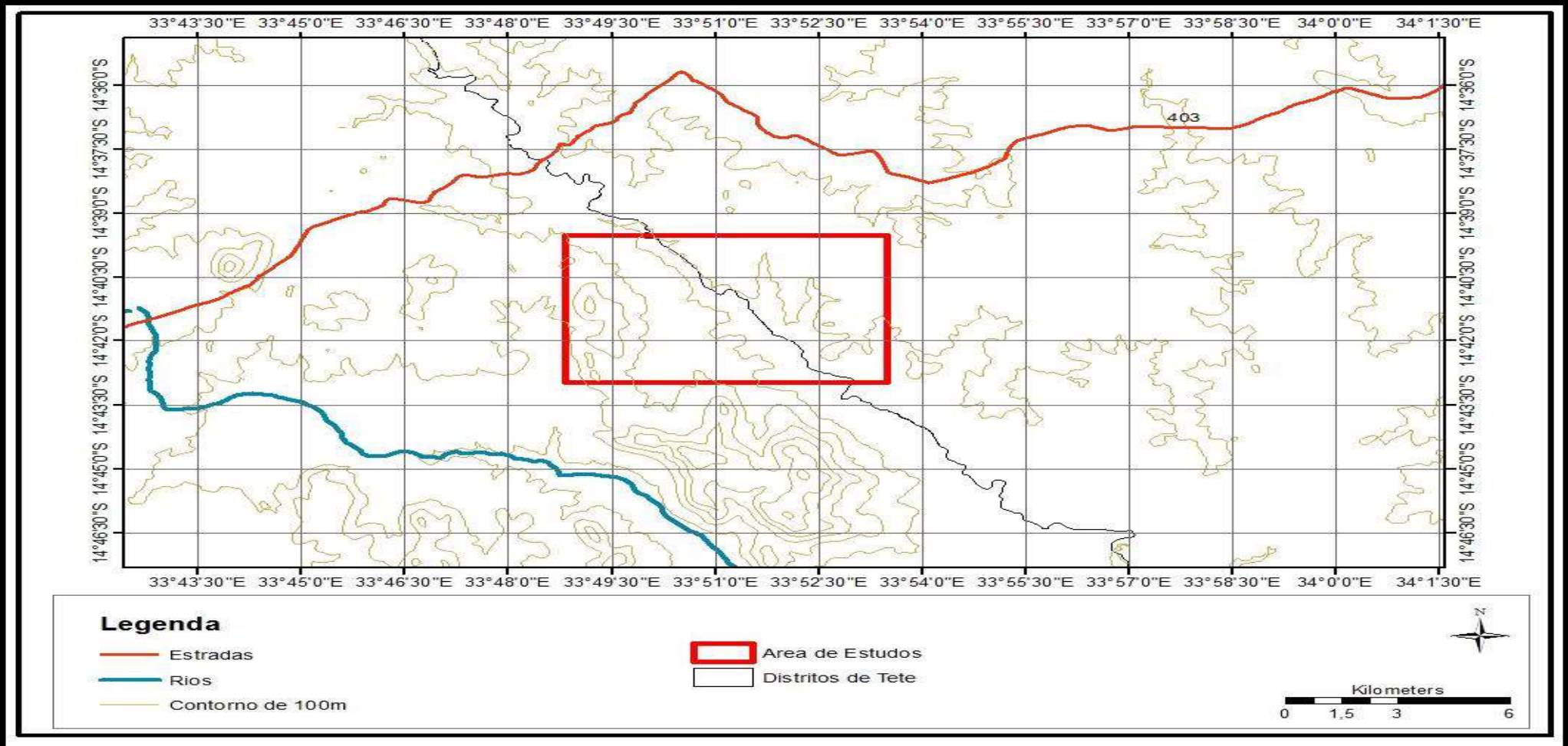
## Legenda

- P2FD- Granito de Desaranhama; granito biotítico e granodiorito
- P2FDd- Granito de Desaranhama deformado
- P2AGqz- Quartzito

- P2AGto- gneiss quartzo-feldspático tonalítico
- P2AGsv- Gnaiss quartzo-feldspático e gnaiss anfibólico
- Area de Estudos



# EARTHCON RESOURCES II – GOLD AND ASSOCIATE MINERALS



## EARTHCON RESOURCES II – GOLD ARTISNAL MINING



## EARTHCON RESOURCES II – GOLD AND ASSOCIATE MINERALS



## EARTHCON RESOURCES II – GOLD AND ASSOCIATE MINERALS



## EARTHCON RESOURCES II – GOLD AND ASSOCIATE MINERALS



# EARTHCON RESOURCES II – GOLD AND ASSOCIATE MINERALS

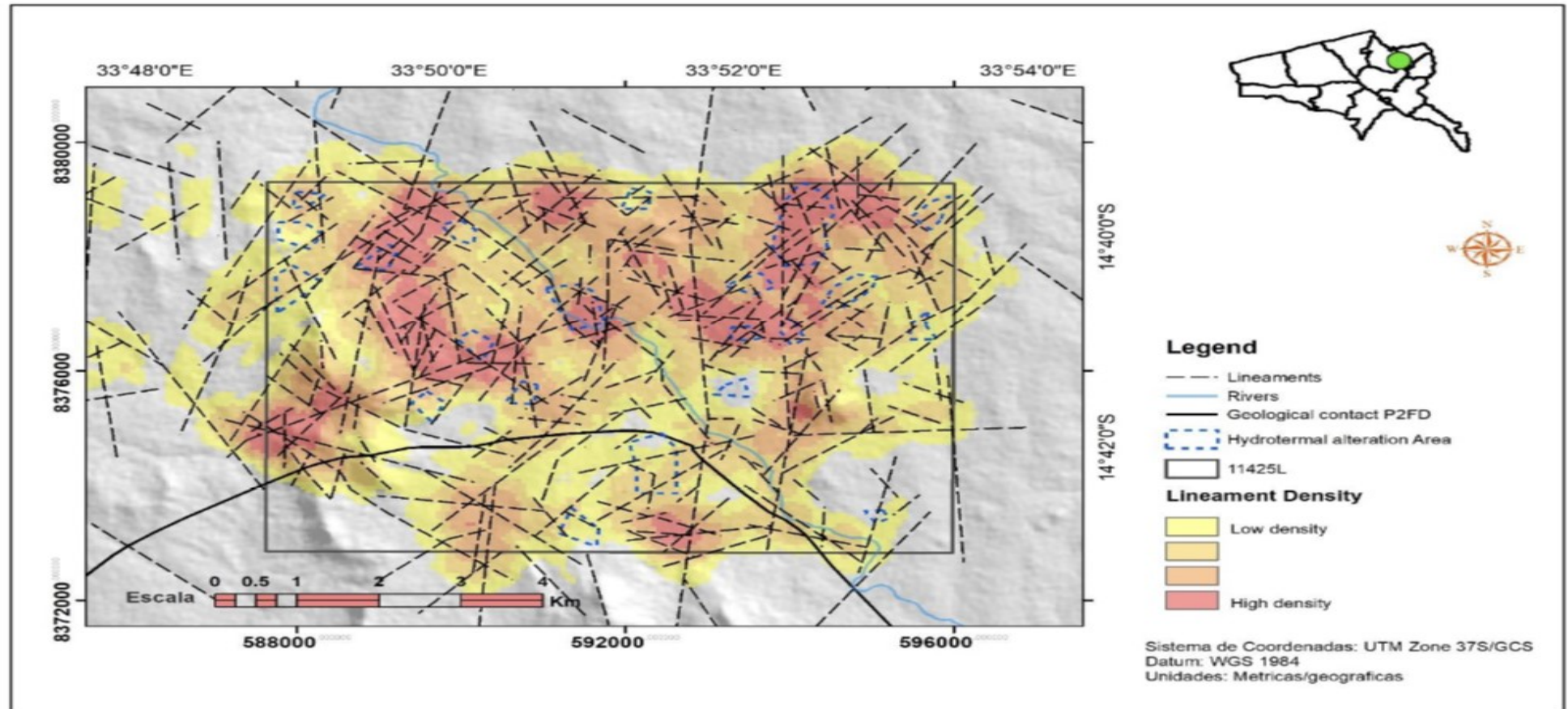
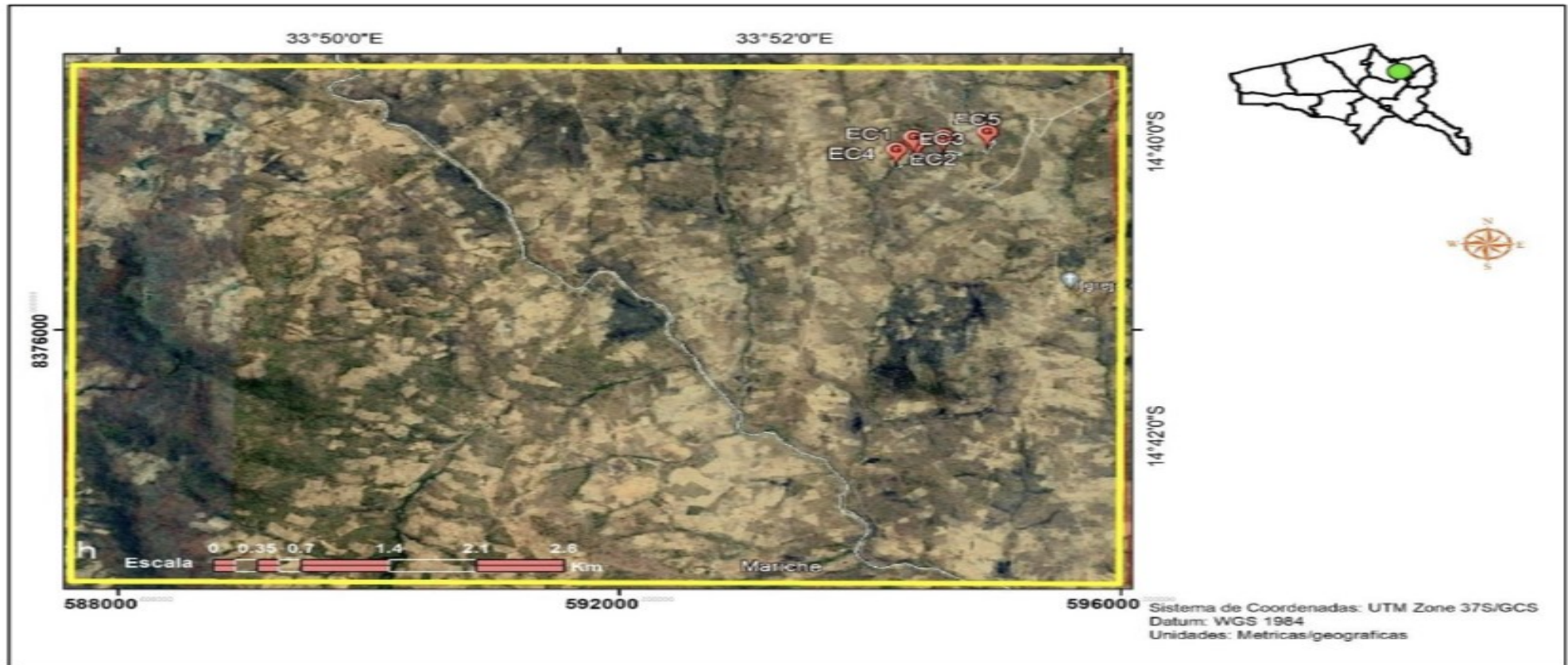


Fig. 16. Exploration Map based on Hydrothermal and Lineament Structures

# EARTHCON RESOURCES II – GOLD AND ASSOCIATE MINERALS



*Fig. 19. Area with local miners activities (Gold extraction)*

# EARTHCON RESOURCES II – GOLD AND ASSOCIATE MINERALS

